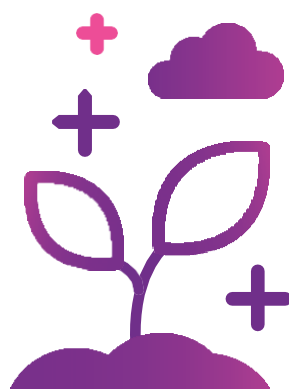


## General Tariff



## BIL Direct

(exclusively online and remotely managed account)



## BIL Gold



## BIL Platinum



### ▼ Pricing

Monthly fee	<b>€2.50</b> Per account	<b>€0</b> Per account	<b>€0</b> for 18-29 <b>€8.50</b> for 30+	<b>€18</b>
-------------	--------------------------	-----------------------	---	------------

### ▼ Basic features

Current accounts	<b>1 FREE</b>	<b>1 FREE</b>	<b>INCLUDED</b>	<b>INCLUDED</b>
Savings accounts			<b>INCLUDED</b>	<b>INCLUDED</b>
Monthly electronic statement	<b>FREE</b>	<b>FREE</b>	<b>FREE</b>	<b>FREE</b>
BILnet	<b>YES</b>	<b>YES</b>	<b>YES</b>	<b>YES</b>
LuxTrust Mobile	<b>YES</b>	<b>YES</b>	<b>YES</b>	<b>YES</b>

### ▼ Bank cards

BIL V PAY Debit	<b>1 FREE</b>	<b>1 FREE</b>	<b>1 FREE</b>	<b>1 FREE</b>
Visa Classic		<b>-25%</b>	<b>1 FREE</b>	<b>1 FREE</b>
BIL Visa Gold			<b>1 FREE</b>	<b>1 FREE</b>
BIL Visa Platinum				<b>1 FREE</b>

### ▼ Usage features

Electronic Euro transfers	<b>UNLIMITED</b>	<b>UNLIMITED</b>	<b>UNLIMITED</b>	<b>UNLIMITED</b>
Instant transfers			<b>UNLIMITED</b>	<b>UNLIMITED</b>
Monthly ATM withdrawals On the BILnetwork	<b>UNLIMITED</b>	<b>UNLIMITED</b>	<b>UNLIMITED</b>	<b>UNLIMITED</b>
Monthly ATM withdrawals Outside of the BILnetwork		<b>1 FREE</b>	<b>1 FREE</b>	<b>2 FREE</b>

### ▼ Credit facilities

Authorised overdraft file opening			<b>FREE</b>	<b>FREE</b>
Authorised overdraft rate			<b>-25 bps</b>	<b>-50 bps</b>
Personal loan file opening			<b>-50%</b>	<b>-50%</b>
Personal loan rate			<b>PREFERENTIAL</b>	<b>PREFERENTIAL</b>
Mortgage arrangement fee				<b>-25%</b>